

FINANCIAL INVESTIGATOR



SUSTAINABLE
FINANCE
LAB

Improving impact via public & private markets in energy transition,
natural capital & biodiversity?

Brenda Kramer

15 April 2025

THE EAGLE HAS RETURNED..



LESSONS

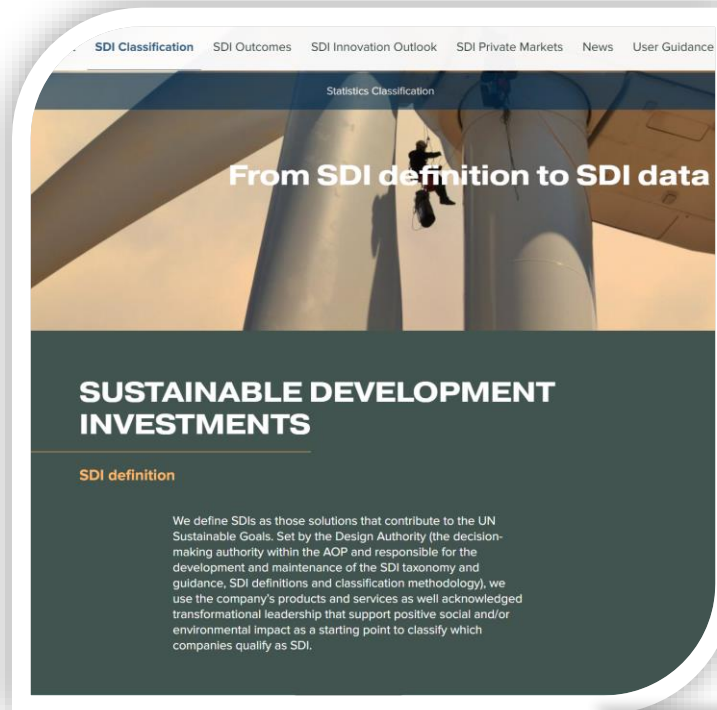
Feel WHY

Understand WHAT

Explore HOW



ABOUT ME



CONTENT

1. Introduction
2. **IM**proving impact
3. Three guiding principles
 1. Feel Shared goals and responsibility
 2. Understand and improve value chains
 3. Explore systemic approaches
4. Next frontier research

Climate crisis on track to destroy capitalism, warns top insurer

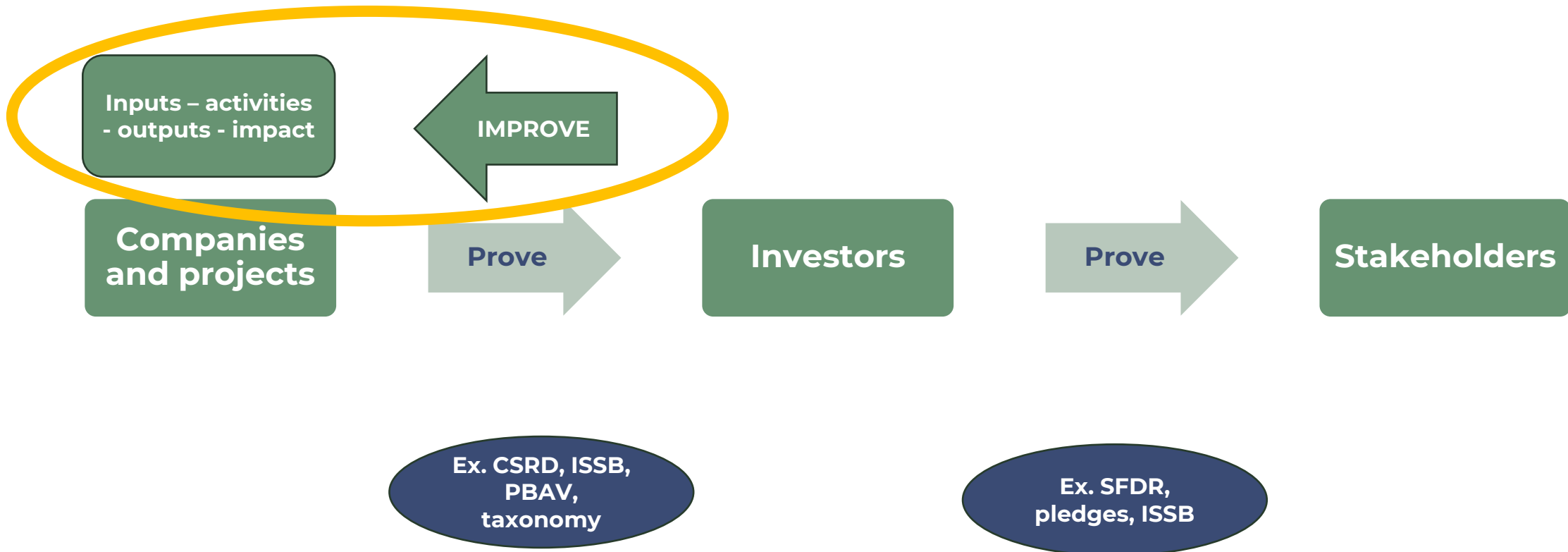
Action urgently needed to save the conditions under which markets - and civilisation itself - can operate, says senior Allianz figure



Some companies were ending home insurance in California due to wildfires, says Allianz SE board member. He says that without insurance, many other financial services become unviable, from mortgages to investments. Photograph: Mario Tama/Getty Images

The climate crisis is on track to destroy capitalism, a top insurer has warned, with the vast cost of extreme weather impacts leaving the financial sector unable to operate.

IM-PROVING IMPACT

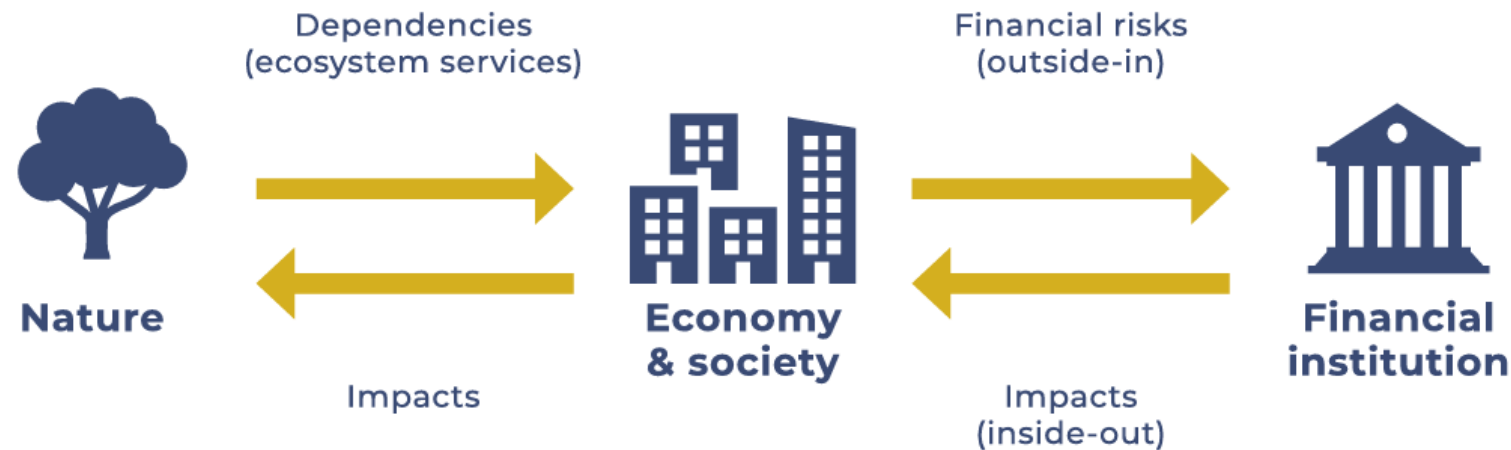




SOLUTION
successful
plan KNOWLEDGE risk
ASSESSMENT risk event
DEFINITION DECISION
IMPACT
SCOPE CONTROL RISK STRATEGY PROCESS COMPANY event
finance
SUCCESS
SOLUTION
IMPLEMENTATION
FINANCE
STRATEGY
COST

PRINCIPLE I: WHY? GOALS AND RESPONSIBILITY

Figure 4. Simple visualisation of the interaction between nature and the financial sector

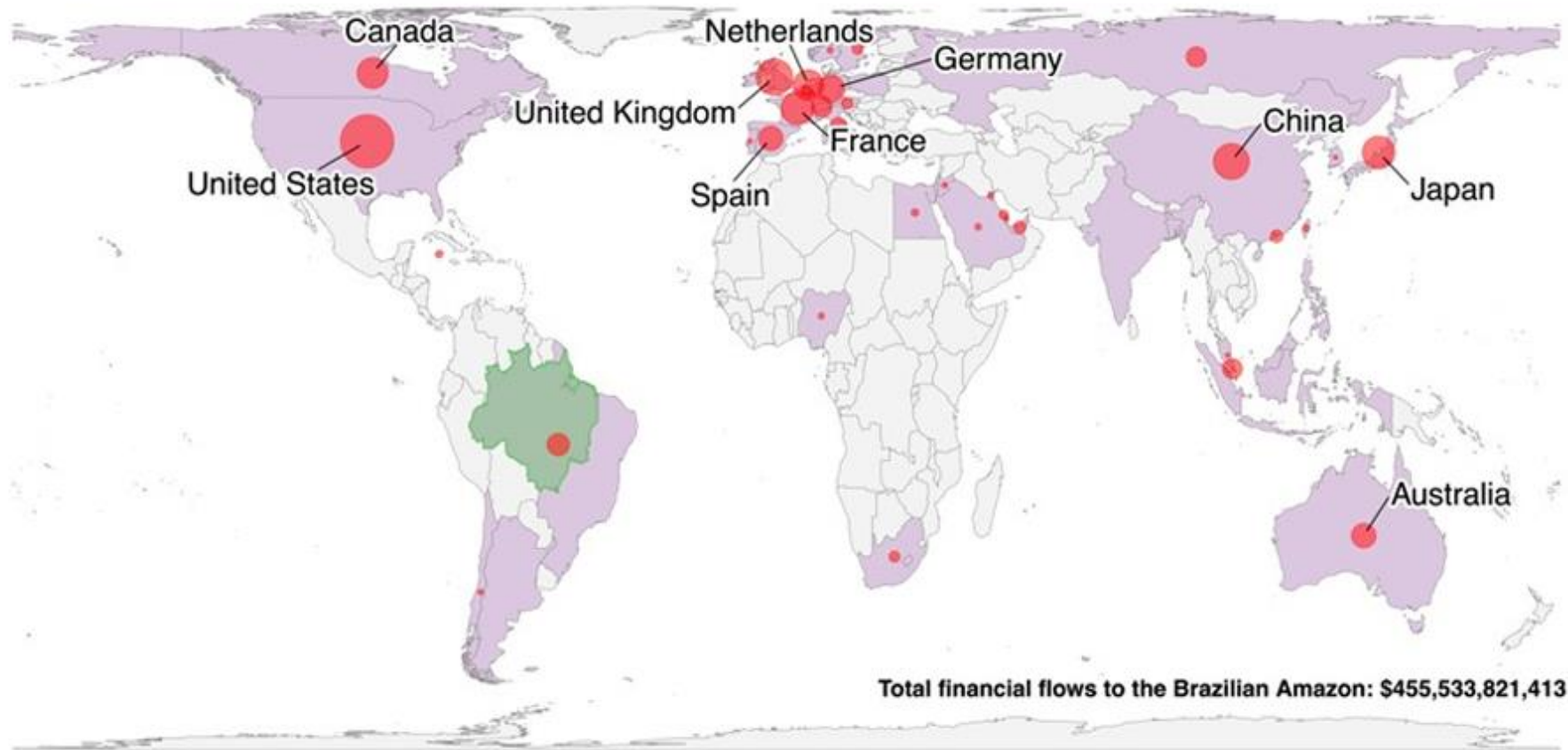


Source: Sustainable Finance Lab (2023)

Figure 1. Financial flows to ETP risk companies in the Brazilian Amazon and Indonesian peatlands, by country. Top ten countries labelled. Ecosystem boundaries filled in green.

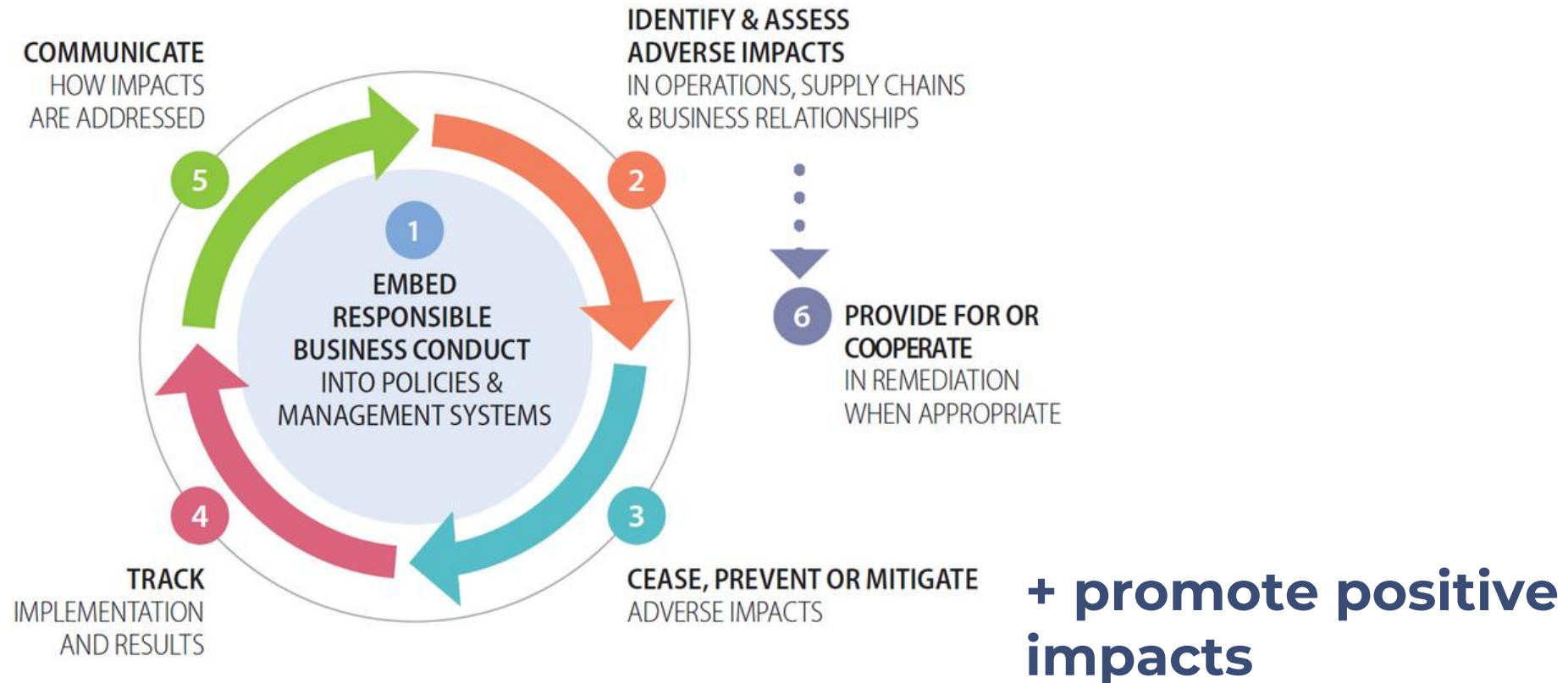
A

Financial flows to companies linked to the Brazilian Amazon, by country





PRINCIPLE II: WHAT? UNDERSTAND WHAT SHOULD BE IMPROVED?



PRINCIPLE III HOW? DECIDE FOCUS AND EXPERIMENT

Figure 7. Classification on significant impacts and dependencies on nature

	Direct impacts					Direct dependencies			
	Land/sea use change	Resource exploitation?	Climate change	Pollution	Invasive species/other	Direct physical input	Enabling production	Mitigating direct impacts	Protecting from disruption
Agriculture, forestry & fisheries	Dark orange	Dark orange	Light orange	Light orange	Light orange	Dark green	Dark green		Dark green
Energy	Dark orange	Dark orange	Light orange	Light orange	Light orange	Dark green	Dark green		Dark green
Mining	Dark orange	Dark orange	Light orange	Light orange	Light orange	Light green	Light green		Light green
Transportation	Light orange	Light orange	Light orange	Light orange	Light orange	Light green			Dark green
Food and beverages	Light orange	Light orange	Light orange	Light orange	Light orange	Dark green			
Apparel	Light orange	Dark orange	Light orange	Light orange		Dark green			
Utilities	Light orange	Light orange	Light orange			Dark green	Dark green		Dark green
Chemicals	Light orange	Dark orange	Light orange	Light orange		Light green			
Manufacturing	Light orange	Light orange	Light orange	Light orange		Dark green			
Construction	Dark orange	Light orange	Light orange	Light orange		Dark green			Light green

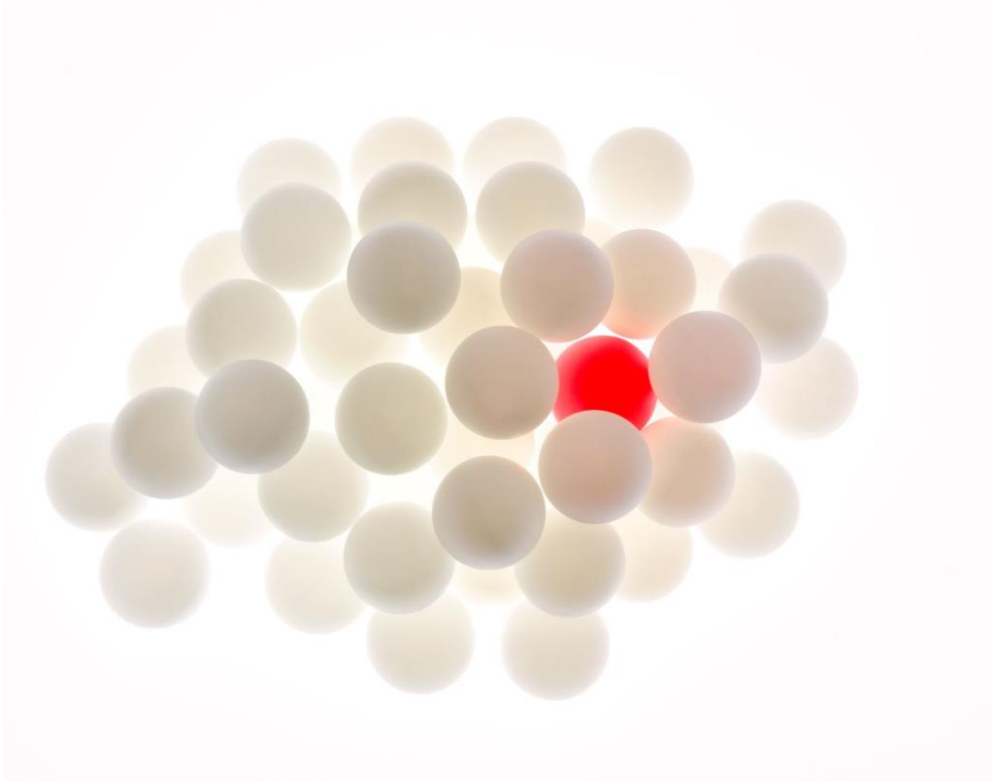
Source: UNEP-WCMC (2022a)

NEXT FRONTIER: SYSTEMIC INVESTING

- deploys capital across solutions and asset classes
- enrolls a constellation of actors toward a systemic change.



IMPROVING IMPACT



Shared goals and responsibility

Understand and improve value chains

Explore systemic approaches

**With, intention, focus and courage, we
can keep the eagle alive**



our world

